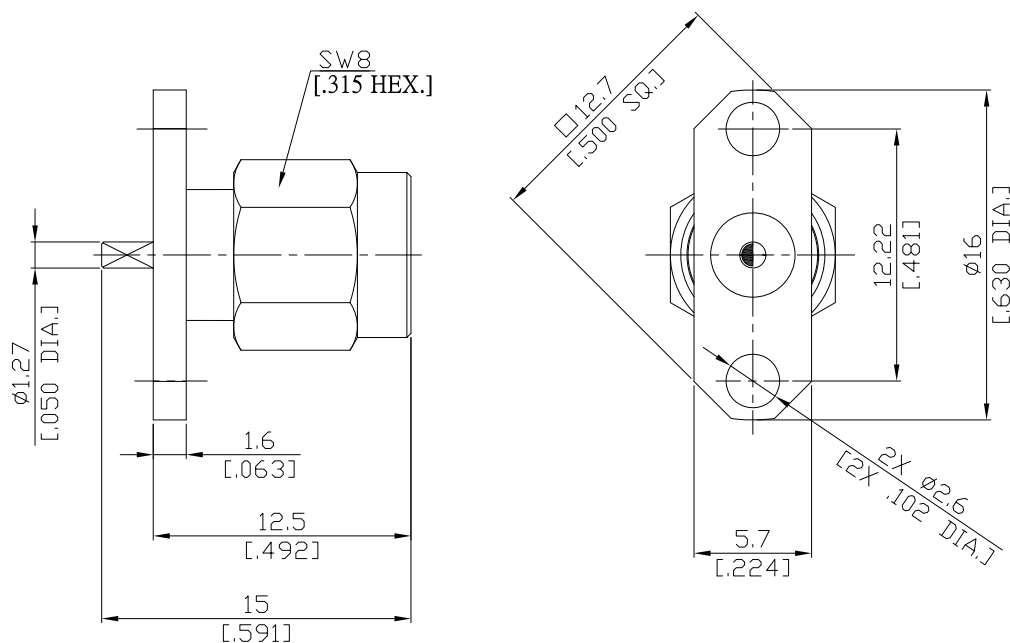


SMA plug (male) Connector Solder Attachment 2 Hole Flange Mount  
Semicircular Terminal, 12.22mm (.481 inch) Hole Spacing DC-18GHz VSWR1.30

## SMA1GTC50-1500A / 1XX



All dimensions are in mm [inch]

Tolerances according to DIN ISO 2768-mH

### Interface

According to

IEC 61169-15; MIL-STD-348B/310

### Electrical Data

|                                                |                      |
|------------------------------------------------|----------------------|
| Impedance                                      | 50 Ω                 |
| Frequency                                      | DC to 18 GHz         |
| VSWR (Return Loss)                             | ≤ 1.30 (≥ 17.7 dB)   |
| Insertion Loss                                 | ≤ 0.05 x √F (GHz) dB |
| Insulation Resistance                          | ≥ 5 GΩ               |
| Center Contact Resistance                      | ≤ 3 mΩ               |
| Outer Contact Resistance                       | ≤ 2 mΩ               |
| Test Voltage                                   | 1000 V rms           |
| Working Voltage (at sea level)                 | 480 V rms            |
| Power Handling (at 20 °C, sea level, VSWR 1.0) | ≤ 200 W @ 2 GHz      |

### Material And Plating

| Piece Parts    | Material        | Plating                                                                          |
|----------------|-----------------|----------------------------------------------------------------------------------|
| Centre contact | Brass           | Gold plating, 3 μinch<br>(Non-magnetic nickel-phosphorus underplating, 80 μinch) |
| Body           | Stainless Steel | Passivated                                                                       |
| Insulator      | PTFE            |                                                                                  |
| Gasket         | Silicone Rubber |                                                                                  |
| Coupling nut   | Stainless Steel | Passivated                                                                       |

SMA plug (male) Connector Solder Attachment 2 Hole Flange Mount  
Semicircular Terminal, 12.22mm (.481 inch) Hole Spacing DC-18GHz VSWR1.30

## SMA1GTC50-1500A / 1XX

### Mechanical Data

|                                   |                  |
|-----------------------------------|------------------|
| Coupling mechanisms               | Screw-lock       |
| Mating Cycles                     | ≥ 500            |
| Centre Contact                    | Soldered         |
| Terminal Type                     | Semicircular     |
| Captivated Type                   | Mechanical       |
| Center Contact Captivation: axial | ≥ 27 N           |
| radial                            | ≥ 3 Ncm          |
| Coupling Test Torque              | max. 1.7 Nm      |
| Recommended Torque                | 0.8 Nm to 1.1 Nm |

### Environmental Data

|                     |                                 |
|---------------------|---------------------------------|
| Temperature Range   | -65°C to +165°C                 |
| Thermal shock       | MIL-STD-202, Meth. 107, Cond. B |
| Corrosion           | MIL-STD-202, Meth. 101, Cond. B |
| Vibration           | MIL-STD-202, Meth. 204, Cond.D  |
| Shock               | MIL-STD-202, Meth. 213, Cond. I |
| Moisture Resistance | MIL-STD-202, Meth. 106          |
| RoHS                | compliant                       |

### Packing

Single or 100